



SPEED GATE TURNSTILES

GS-2000 Series

GateSet EcoSmart Line GS-2000 Series Speed Gate Turnstiles require minimal space with their intelligent design while providing advanced features such as anti-tail-gating and anti-pass-back thanks to the 14 pairs of optical sensors throughout the passage lane. With its elegant design and high reliability, GS-2000 Series is the perfect solution for areas that require a cost-effective solution without compromising from quality.

EcoSmartLineGS-2000Datasheet v.2.0

Functional Highlights



Swing Wing Movement



Bidirectional



Indoor



Security / Comfort



30 Passages / min

Usage Areas

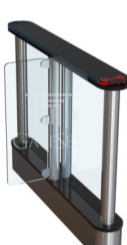
Access Control

Fee Collection
Access Restriction
Business Centers
Government Offices
Airports
Industrial Plants

Products in this Series

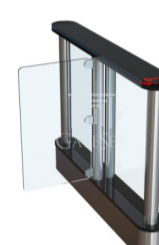
GS-2300

- Standard Wing
- 304 Stainless Steel Body
- Black Tainted Glass Top
- Configured as:
 - * Master / Starting Unit or
 - * Slave / Ending Unit
- Provides one 550 mm wide Passage together with corresponding standard wing



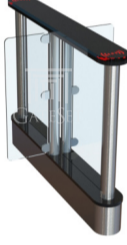
GS-2900

- Disabled Single Wing
- 304 Stainless Steel Body
- Black Tainted Glass Top
- Configured as:
 - * Master / Starting Unit or
 - * Slave / Ending Unit
- Provides one 900 mm wide Passage together with corresponding disabled wing



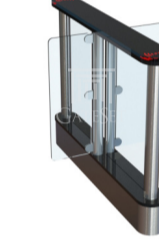
GS-2600

- Standard Double Wing
- 304 Stainless Steel Body
- Black Tainted Glass Top
- Configured as:
 - * Master / Center Unit and
 - * Slave / Center Unit
- Provides two 550 mm wide Passages at each side together with corresponding standard wings



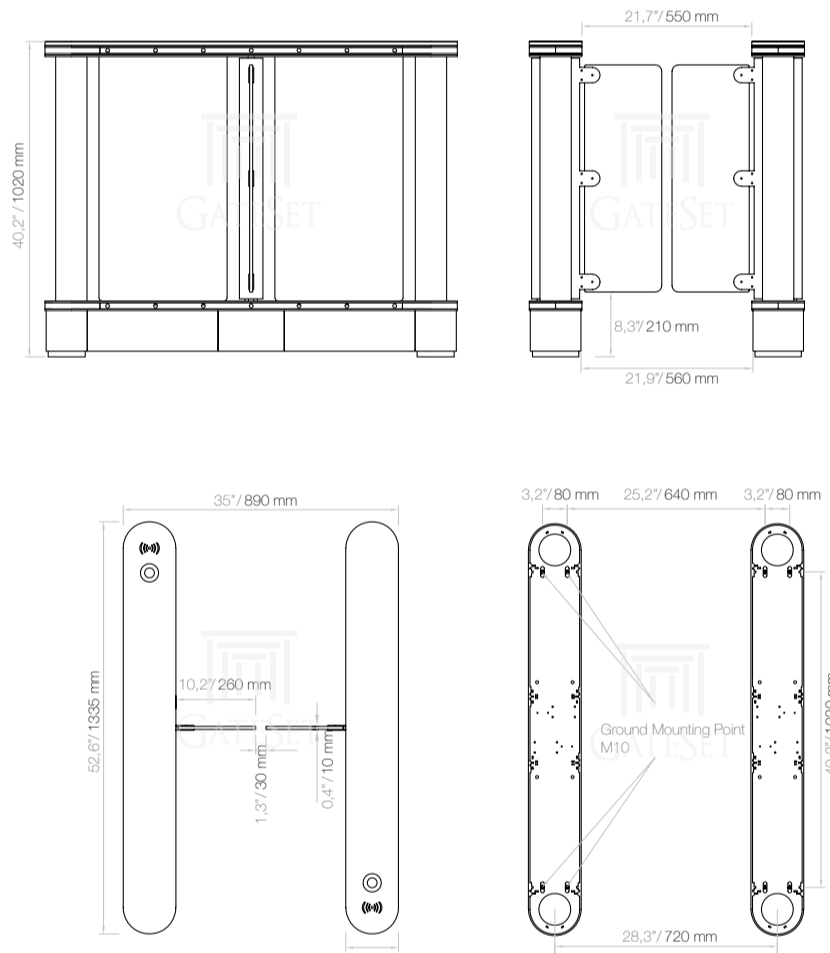
GS-2920

- Hybrid Double Wing
- 304 Stainless Steel Body
- Black Tainted Glass Top
- Configured as:
 - * Master / Center Unit and
 - * Slave / Center Unit
- Provides one 550 mm wide and one 900 mm wide Passages at each side together with corresponding standard and disabled wings



EcoSmartLineGS2000Datasheet v.2.0

Drawings and Dimensions*



* Dimensions are given for 1 Passage Configuration. Subject to change depending on design or project needs without prior notice

Technical Specifications*

MATERIAL - MAIN BODY
MATERIAL - OBSTACLE
MATERIAL - TOP COVER
MAIN BODY DIMENSIONS (mm)
OBSTACLE LENGTH (mm)
PASSAGE WIDTH (mm)
OPERATING VOLTAGE
POWER CONSUMPTION
OPERATING TEMPERATURE
FUNCTIONS

304 grade stainless steel
10 mm thick tempered safety glass. Optional: Smoke colored glass
10 mm black tempered glass
170 x 1335 x 1020
260 mm
550 mm
100-230 V AC, 47-60 Hz
20W during passage, 8W during standby (For two wings)
-0 °C / + 55 °C

Works bidirectionally and allows the passage of a single person only with its microprocessor control, electronic passage memory feature saves in memory card swipes that occur before a passage is completed and allows them to pass without closing the wings.
Optional: 2 x RS232 and 1 x RS485 communication ports.

14 reciprocal sensors in every turnstile.

Wings are operated by means of a servomotor. Precision motor movement with 16 bit microcontroller and encoder support, and motor-locking in the event of unauthorized pass.

With 4 security levels that can be defined as desired by the customer, turnstile is able to detect Unauthorized passes and passes in the opposite direction and emits an audio or discreet warning.

Led lighting around the top plate and transition leds.

Wings automatically rotate to open position in order to ensure safe evacuation during emergency

Position Sensor feedback is used to determine in which direction the wings will open

Ease of installation with compact design

ISO 9001:2015

2 Years

SENSOR CONTROL

MECHANISM

SAFETY LEVEL SETTING

INDICATOR

EMERGENCY OPERATION

INSTALLATION

CERTIFICATION

WARRANTY

* Subject to change depending on design or project needs without prior notice

EcoSmartLineGS-2000Datasheet v.2.0

Optional Accessories



DC Power Pack

With DC Power Pack, wings can be configured to open automatically in case of power failure



Laser Logo Engraving on Wings

Personalized graphics engraving with laser on obstacles are provided on demand



Stand-Alone Card Reader

For sites without Access Control System, seamless stand-alone card reader is available



Button Control Panel

Designed for ease of operation from reception or supervision desks, remote or wired options

Finishing Options

Standard

304 Stainless Steel

Optional

Black Stainless Steel

Optional

Powder Coating with Anti-Rust Layer and Heat Treatment (RAL Colours Available)

