

RISING ARM BARRIERS GTR Series

Brand new member of GateSet Rising Arm Barriers, GTR Series is designed to meet latest requirements of the industry while inheriting all **high-end features** of the previous GateSet barrier models. In order to provide traffic control in extremely busy areas, GTR Series is equipped with frequency inverter which controls a powerful motor with intricate precision, achieving a smooth arm operation even at the highest speeds such as 0.6 seconds. With 100% duty cycle, GTR Series Rising Arm Barriers are able to handle more than 10,000 vehicles per day.

GTRSeriesDatasheet v.2.0

Usage Areas

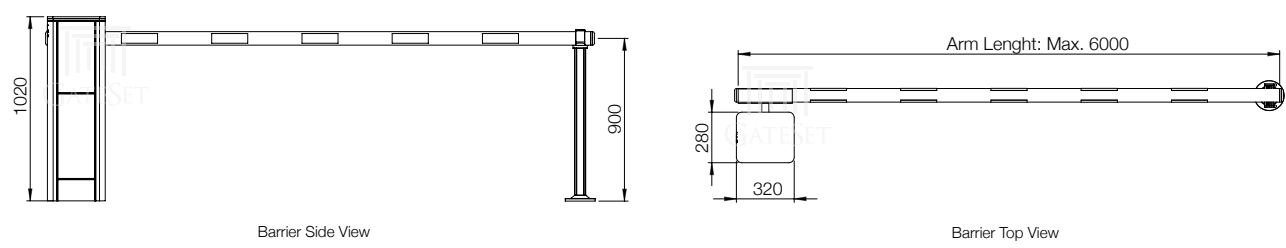
<i>Access Control</i>	Toll Gates Car Parking Areas Airports Business Centers Industrial Plants Government Offices Military Compounds
-----------------------	--

Featured Characteristics

<i>Cutting Edge</i>	Possesses top of the line features of crash detection with break arm function, movement and position indication with proximity sensors, rendering it compliant with standards such as HCIS (with optional accessories)
<i>Precise</i>	Smooth speed and movement control with frequency inverter, providing the highest operation speed of 0.6 seconds with seamless movement at limit positions
<i>Elegant</i>	Stands out from subsidiary products with aesthetic design on top of exceeding all industrial expectations
<i>Flexible</i>	Effortless change of arm direction with multidirectional gearbox design. Ability to release the arm for manual operation with a single action
<i>Heavy Duty</i>	Suitable for intense usage at high frequency access control points, supporting 10,000+ movements per day

GTRSeriesDatasheet v.2.0

Drawings and Dimensions*



Subject to change depending on design or project needs without prior notice

Technical Specifications*

<i>CASE DIMENSIONS</i>	320 x 280 x 1020 mm (WxLxH)
<i>MATERIAL</i>	Barrier case: 2 mm heat treated powder coating with anti-rust layer (standard) 304 grade stainless steel case (optional) Motor and gearbox holder: 10 mm galvanized steel sheet
<i>RISING ARM</i>	75 mm Diameter Circular white (RAL9016) aluminum boom with reflective stripes. Up to 6 meters (standard)
<i>TOP COVER</i>	2 mm heat treated powder coating with anti-rust layer (standard) 10 mm cast aluminum with LED Stripe for enhanced visibility (optional)
<i>OPENING / CLOSING TIME</i>	From 0.6 seconds at 3 meters arm to 2.5 seconds at 6 meters arm Adjustable from 0.6 to 6 seconds with parameter setup depending on requirements
<i>OPERATION FREQUENCY</i>	6,000+ consecutive movements supported with 100% duty cycle Suitable for handling 10,000+ vehicle passage per day
<i>SPEED CONTROL</i>	Operation speed, ramp-up, ramp-down control parameters adjustment on Frequency Inverter panel
<i>POWER INPUT</i>	220 V AC Single Phase
<i>MOTOR</i>	0.75 kW, 380 V AC 3 phases 50-60 Hz controlled by Frequency Inverter
<i>TRANSMISSION</i>	Multi Directional Gearbox providing effortless change of arm direction
<i>MOVEMENT CONTROL</i>	Smooth Control down to Zero Speed with Control Techniques Inverter
<i>MANUAL OPERATION</i>	Manual Rotating Key in Case of Power Outage
<i>POSITION CONTROL</i>	Inductive limit switches with physical position adjustment for down and up positions
<i>AUTO CLOSE</i>	Barrier automatically closes itself, close time is adjustable
<i>OBSTACLE DETECTION</i>	Arm detects obstacle in both direction and reverse operation instantly
<i>CRASH DETECTION</i>	Arm releases itself automatically from its mounting point when hit by vehicle (optional)
<i>OPERATING TEMPERATURES</i>	- 25 °C / +70 °C
<i>AMBIENT HUMIDITY</i>	100% RH or less (without condensation)
<i>PROTECTION CLASS</i>	Barrier Case: IP54, Electronics: IP65
<i>ACCESS CONTROL</i>	Compatible with all kinds of access equipment Seamless integration with GateSet Parking Management Systems
<i>INSTALLATION</i>	Slotted external mounting plate for robust and easy installation
<i>FOUNDATION DIMENSIONS</i>	400 x 400 x 400 mm (WxLxH)
<i>OPTIONAL FEATURES</i>	Manual Operation Switch, Crash Detector with Swing Arm, 90° Articulated Arm, 180° Articulated Arm
<i>ACCESSORIES (STANDARD)</i>	Integrated Photocell, Button Control (standard)
<i>ACCESSORIES (OPTIONAL)</i>	Cast Aluminum Top Cover with LED Stripe, Loop Sensor, Flashing Light, Remote Control, Traffic Lights
<i>WARRANTY</i>	2 years
<i>CERTIFICATION</i>	ISO 9001:2015

* Subject to change depending on design or project needs without prior notice

GTRSeriesDatasheet v.2.0

Optional Features



Manual Operation Switch

Manual Operation Switch is available optionally to control barrier. When switch is on, barrier arm is raised without triggering any alarm and no other command is accepted. When switch is off, barrier arm closes and automatic operation is resumed.



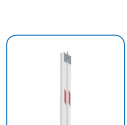
Crash Detector Arm

In cases where arm is hit by a vehicle, the arm breaks away and alarm is triggered by a proximity sensor. With this feature, both the mechanism of the barrier is saved from damage, and hostile vehicles are detected



90° Articulated Arm

For sites with height limitations, barrier arm can optionally be configured to fold at an angle of 90°, preventing any movement interference and providing ease of installation in confined areas such as underground parking lots.



180° Articulated Arm

For sites with height limitations, barrier arm can optionally be configured to fold with an angle of 180°, preventing any movement interference and allowing extra space for higher vehicles

Optional Accessories



LED Striped Top Cover

Aluminum Cast top cover with LED stripe is available to enhance barrier outlook and visibility



Loop Sensor

Loop Sensor can be added either to enhance operation safety or trigger barrier movement



Flashing Light

24 V DC Flashing Light can be used to enhance visibility and safety during operation



Traffic Lights

Red - Green colored, Power LED technology, 200 mm diameter, delivered with galvanized post



Remote Control (Wireless)

Wireless Remote Control System with receiver and transmitter units, with rolling code security



Control Keyboard (Wired)

Designed for Guard Rooms, ABC Series control boards can be used to command barriers

